

3-Wire
3-Leiter

Ø 15.1 mm
adjustable, Ø >2 mm
einstellbar, Ø >2 mm

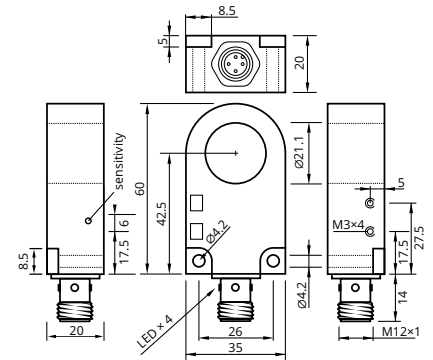
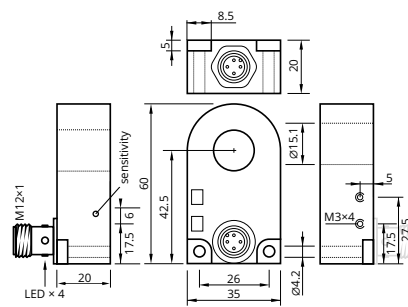


static
statisch

Ø 21.1 mm
adjustable, Ø >2 mm
einstellbar, Ø >2 mm



static
statisch



Resolution	Auflösung	adjustable, Ø >2 mm	einstellbar, Ø >2 mm	adjustable, Ø >2 mm	einstellbar, Ø >2 mm
Ring Diameter	Ringdurchmesser	Ø 15.1 mm		Ø 21.1 mm	
Operating Voltage	Betriebsspannung	10...30 V _{DC}		10...30 V _{DC}	
Reverse Polarity Protection	Verpolungsschutz	built-in	integriert	built-in	integriert
Current Consumption	Stromverbrauch	<10 mA		<10 mA	
Current Load Capability	Ausgangsbelaubarkeit	200 mA		200 mA	
Short Circuit Protection	Kurzschlusschutz	built-in, self-resetting	integriert, selbstrück.	built-in, self-resetting	integriert, selbstrück.
Impulse Lengthening	Impulsverlängerung				
Voltage Drop	Spannungsabfall	<2 V @ 200 mA		<2 V @ 200 mA	
Adjustment	Einstellung	multi turn pot.	Mehrgangpoti	multi turn pot.	Mehrgangpoti
Object Speed	Teilegeschwindigkeit	- <35 m/s (<115 ft/s)		- <35 m/s (<115 ft/s)	
Repeatability	Wiederholgenauigkeit	<1%		<1%	
Response Time Release Time	Ansprechzeit Abfallzeit	0.5 ms 10 ms		0.5 ms 10 ms	
Operating Temperature	Betriebstemperatur	-25...+70 °C		-25...+70 °C	
Protection Class	Schutzklasse	IP67		IP67	
Sensing Face	Sensorfläche	PBT		PBT	
Housing Material	Gehäusewerkstoff	PA 6.6		PA 6.6	
Connection	Anschluss	conn. M12	Stecker M12	conn. M12	Stecker M12
Switching Indicator	Schaltanzeige	built-in	integriert	built-in	integriert
Article Code PNP, NO	—/—	IR 15 PSK-R-ST4			
Article Code PNP, NC	—/—	IR 15 POK-R-ST4			
Article Code PNP, NO NC	—/— —/—			IR 21 PUK-ST4	
Article Code NPN, NO	—/—	IR 15 NSK-R-ST4			
Article Code NPN, NC	—/—	IR 15 NOK-R-ST4			
Article Code NPN, NO NC	—/— —/—			IR 21 NUK-ST4	

Ø 21.1 mm
adjustable, Ø >2 mm
einstellbar, Ø >2 mm



static
statisch

Ø 6.1 mm
adjustable, Ø >0.5 mm
einstellbar, Ø >0,6 mm

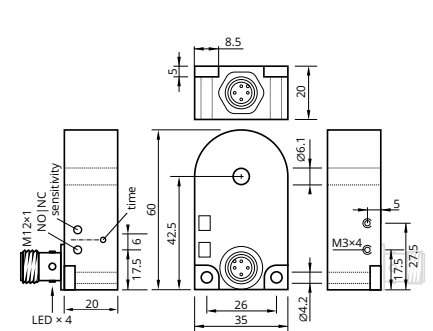
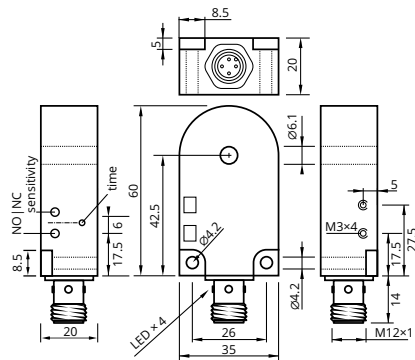
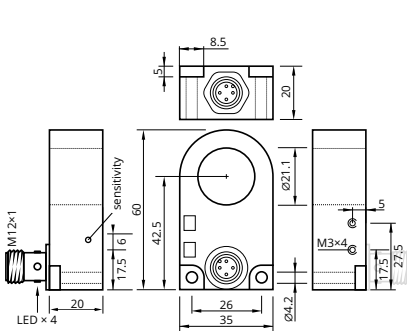


dynamic
dynamisch

Ø 6.1 mm
adjustable, Ø >0.5 mm
einstellbar, Ø >0,6 mm



dynamic
dynamisch



adjustable, Ø >2 mm einstellbar, Ø >2 mm

Ø 21.1 mm

10...30 V_{DC}

built-in integriert

<10 mA

200 mA

built-in, self-resetting integriert, selbstrück.

<2 V @ 200 mA

multi turn pot. Mehrgangpoti

- | <35 m/s (<115 ft/s)

<1%

0.5 ms | 10 ms

-25...+70 °C

IP67

PBT

PA 6.6

conn. M12 Stecker M12

built-in integriert

IR 21 PSK-R-ST4

IR 21 POK-R-ST4

adjustable, Ø >0.5 mm einstellbar, Ø >0,5 mm

Ø 6.1 mm

10...30 V_{DC}

built-in integriert

<10 mA

200 mA

built-in, self-resetting integriert, selbstrück.

0...150 ms

<2 V @ 200 mA

multi turn pot. Mehrgangpoti

- | <35 m/s (<115 ft/s)

<1%

0.2 ms | 0.2 ms

-25...+70 °C

IP67

PBT

PA 6.6

conn. M12 Stecker M12

built-in integriert

IRD 06 PUK-R-ST4

IRD 06 PUK-ST4

IRD 06 PUK-ST4

IRD 06 PUK-R-ST4

IRD 06 PUK-R-ST4

IRD 06 PUK-R-ST4

IRD 06 PUK-R-ST4

IRD 06 PUK-R-ST4

IRD 06 PUK-R-ST4

IRD 06 PUK-R-ST4

IRD 06 PUK-R-ST4

IRD 06 PUK-R-ST4

adjustable, Ø >0.5 mm einstellbar, Ø >0,5 mm

Ø 6.1 mm

10...30 V_{DC}

built-in integriert

<10 mA

200 mA

built-in, self-resetting integriert, selbstrück.

0...150 ms

<2 V @ 200 mA

multi turn pot. Mehrgangpoti

- | <35 m/s (<115 ft/s)

<1%

0.2 ms | 0.2 ms

-25...+70 °C

IP67

PBT

PA 6.6

conn. M12 Stecker M12

built-in integriert

IRD 06 PUK-R-ST4

IRD 06 PUK-R-ST4

IRD 06 PUK-R-ST4

IRD 06 PUK-R-ST4

IRD 06 PUK-R-ST4

IRD 06 PUK-R-ST4

IRD 06 PUK-R-ST4

IRD 06 PUK-R-ST4

IRD 06 PUK-R-ST4

IRD 06 PUK-R-ST4

IRD 06 PUK-R-ST4

Minor changes possible
Geringfügige Änderungen möglich